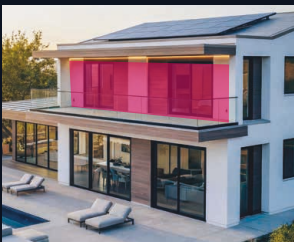


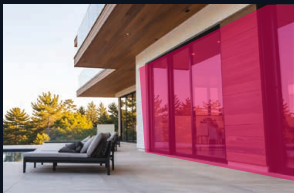
TXI Series

HIGH-MOUNT CURTAIN DETECTION



Elevated Protection

The TXI is the world's first high-mount curtain detector with patented Triple AND logic, ensuring stable, consistent intrusion detection across the entire coverage area. In a compact design, TXI delivers reliable performance even in outdoor harsh environments, with **true pet tolerance** for dependable real-world use.



- Mounting height selectable
2.2–3.0m / 3.0–4.0m
- Detection range 12m x 2.4m (40ft. x 8ft.),
with optional look-down zone
- Detection distance adjustable to prevent over-ranging

WIRED

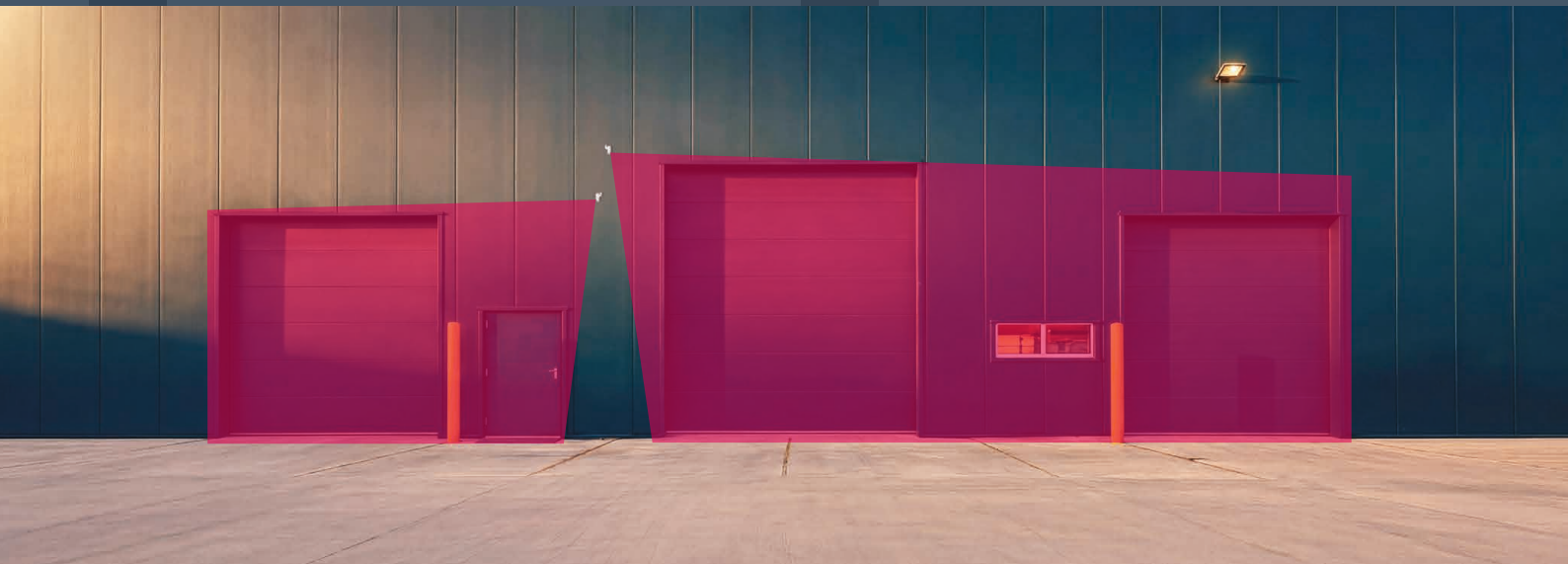
TXI-ST
Triple AND PIR

TXI-DAM
Dual technology with Triple AND PIR, and anti-masking

BATTERY
OPERATED

TXI-R
Triple AND PIR

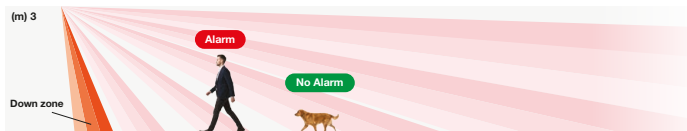
TXI-RDAM
Dual technology with Triple AND PIR, and anti-masking



High-mount curtain detection engineered for superior reliability

Triple AND logic *Patent pending

Triple AND logic (Quad + Dual) *patent pending, combined with advanced SMDA processing delivers stable, consistent detection across the entire area, significantly reducing false alarms, even in harsh weather, moving vegetation, or with pets present.

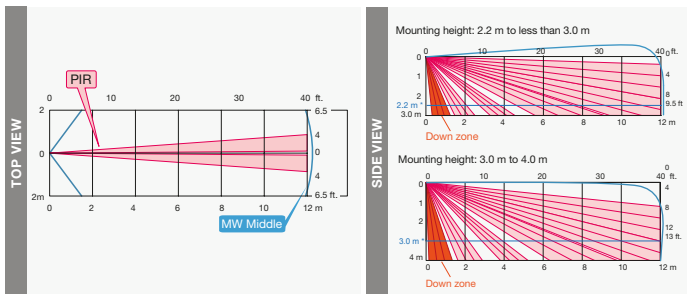


TOUGH MOD2

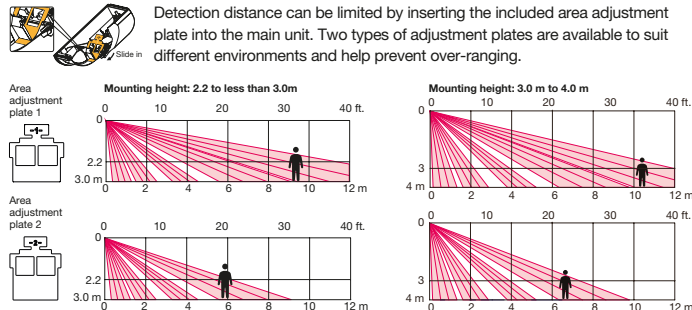
OPEX's advanced microwave module is designed to ensure stable and reliable detection even in bright sunlight.



Selectable mounting height and optional Look-Down zone



Detection distance adjustment to avoid over-ranging



Anti-sabotage protection

IR digital antimasking to detect and alert of any attempts to block, cover, spray, or interfere with the sensor's field of view.

Advanced tamper detection

Front tamper and accelerometer to detect and alert if the sensor is moved, tilted, or physically tampered with.

EOL terminals for faster and easier wiring

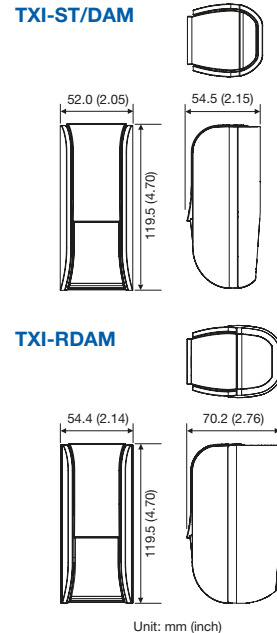
Mounting brackets included for flexible installation

Specifications

Models	TXI-ST	TXI-DAM-X5/-X8/-X9	TXI-R	TXI-RDAM-X5/-X8/-X9
	Wired		Battery-operated	
Detection method	Passive infrared	Passive infrared and Microwave	Passive infrared	Passive infrared and Microwave
Coverage	12 m x 2.4 m (40' x 8')			
Mounting height	2.2 to 4.0 m (7'2" to 13'2")			
Warm-up period	60.0 ± 0.5 s			
Alarm period	2.0 ± 0.5 s			
LED indicator	<ul style="list-style-type: none"> Switchable ON/OFF Red LED Warm-up (Blinks for 60 s) Alarm (Lights for 2 s) Masking detection (Blinks 3 times & repeats) Walk test mode end (fast blinks for 5 s) 	<ul style="list-style-type: none"> Switchable ON/OFF Red LED Warm-up (Blinks for 60 s) Alarm (Lights for 2 s) Masking detection (Blinks 3 times & repeats) Walk test mode end (fast blinks for 5 s) 	<ul style="list-style-type: none"> Switchable ON/OFF Red LED Warm-up (Blinks for 60 s) Alarm (Lights for 2 s) Walk test mode end (fast blinks for 5 s) 	<ul style="list-style-type: none"> Switchable ON/OFF Red LED Warm-up (Blinks for 60 s) Alarm (Lights for 2 s) Masking detection (Blinks 3 times & repeats) Walk test mode end (fast blinks for 5 s)
Electrical				
Power input	9.5 to 16 VDC		3.0 VDC	
Current draw	8 mA (normal) 16 mA (max.) at 12 VDC	12 mA (normal) 19 mA (max.) at 12 VDC	14 µA (Stand-by) 5 mA (max.) at 3.0 VDC	19 µA (Stand-by) 6 mA (max.) at 3.0 VDC
Trouble output (masking)	-	N.C. 24 VDC 0.1 A max. (Resistive load)	-	-
Trouble output (with tamper)	-	-	Solidstate switch, 10 VDC 0.01 A max. Open when either the cover or main unit is removed	Solidstate switch, 10 VDC 0.01 A max. Open when either the cover or main unit is removed, and masking detection
Alarm output	N.C. 24 VDC 0.1 A max. (Resistive load)		Solidstate switch, 10 VDC 0.1 A max	
Tamper output	N.C. 24 VDC 0.1 A max. (Resistive load) Open when either cover, main unit is removed.		-	
Environmental				
Operation temperature	-30°C to +60°C (-22°F to +140°F)	-20°C to +45°C (-4°F to +113°F)	-30°C to +60°C (-22°F to +140°F)	-20°C to +45°C (-4°F to +113°F)
Temperature compensation	Digital (SMDA)			
Environmental humidity	95% max.			
RF interference	No alarm 10 V/m			
IP rating	IP55			
Mechanical				
Dimension	H: 119.5 x W: 52.0 x D: 54.5 mm (H: 4.70 x W: 2.05 x D: 2.15 inch)		H: 119.5 x W: 54.4 x D: 70.2 mm (H: 4.70 x W: 2.14 x D: 2.76 inch)	
Weight	Approx. 122 g (4.3 oz)		Approx. 135 g (4.8 oz)	
Mounting	Wall (with included brackets [side/back]) Wall, Ceiling (with optional bracket:TXI-BKT)			
Accessories				
	Mounting screw x 2, Joint screw x 2, Side-bracket x 1, Back-bracket x 1 Area adjustment plate 1 x 1, Area adjustment plate 2 x 1, Sponge x 2		Mounting screw x 2, Joint screw x 2, Side-bracket x 1, Back-bracket x 1 Area adjustment plate 1 x 1, Area adjustment plate 2 x 1, Connector x 1	

• Specifications and designs are subject to change without prior notice. Schematics included in this document provide an illustrative detection range only.
 • These units are designed to detect an intruder and activate an alarm control panel.
 Being only a part of a complete system, we cannot accept responsibility for any damages or other consequences resulting from an intrusion.

Dimensions



Accessories

TXI-BKT *Patent pending
Wall/Ceiling bracket for added flexibility

PEU

