

AP-20NB Series

Motion detection and smart automation



AP-20NB

WIRED PIR

AP-20NBR

BATTERY-OPERATED PIR

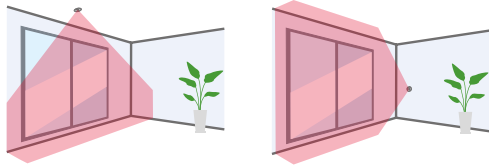
Recessed mount indoor PIR motion detectors offering 6m (20 ft.) narrow detection for security and home/building automation applications.



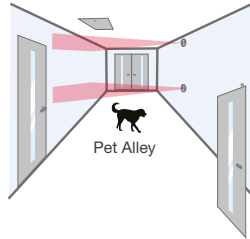
Curtain or plane detection

Compact and discreet, AP-20NB/NBR sensors can be mounted on a wall or ceiling to create 6m (20ft.) curtain or plane detect areas and alert of movement close to windows, doors, or in corridors.

Curtain detection area

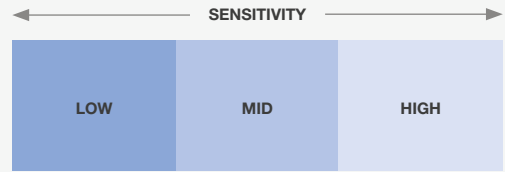


Plane detection area



Selectable sensitivity

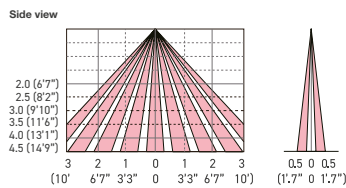
Detection sensitivity can be set to low, medium or high, to adapt to the ambience conditions.



Energy saving

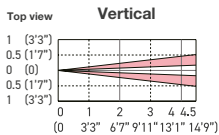
In AP-20NBR it is possible to enable the Battery Saving Timer with a choice between 120 sec. (default) or 5 sec.

Ceiling mount

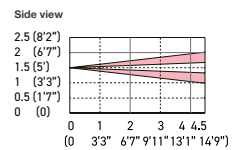
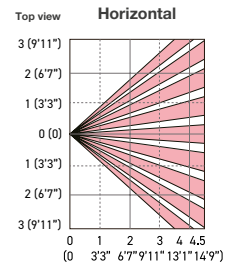
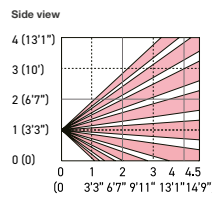


Ceiling mount: 2.5 to 4.5m (8.2 to 14.8ft) height

Wall mount



Wall mount/vertical: 1.0m(3'3") height
Wall mount/horizontal: 1.5m(4'11") height



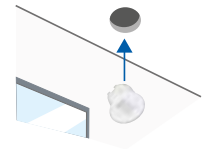
Specifications

Model	AP-20NB(C)	AP-20NBR(C)
Detection method	Passive infrared	
Detection area	<p>< Ceiling mount > 6.0 m x 1.0 m (20' x 3'3") at 4.5 m (14'9") height</p>	<p>< Wall mount/horizontal > 4.5 m x 6.0 m (14'9" x 20") at 1.5 m (4'11") height < Wall mount/vertical > 4.5 m x 1.0 m (14'9" x 3'3") at 1.0 m (3'3") height</p>
Mounting height	<p>< Ceiling mount > 2.5 m to 4.5 m (8'2" to 14'9")</p>	<p>< Wall mount > 1.5 m (4'11"): Horizontal 1.0 m (3'3"): Vertical</p>
Mounting type	Recessed ceiling mount/ Wall mount/ 86-type box mount	
Sensitivity	2.0°C at 0.6 m/s (3.6°F at 2'/s)	
Detection speed	0.3 to 3.0 m/s (1'/s to 9'10"/s)	
LED indicator	Warm-up upon power on: blinking / Stand-by: off Alarm: solid on	Warm-up upon power on: blinking / Stand-by: off Walk test: solid on / Alarm: off
Alarm period	Approx. 2 s	
Illuminance	-	
Battery saving timer	-	120 s/ 5 s selectable
Alarm output	N.O./N.C., 28 V DC 200 mA max.	N.O./N.C., 3.6 V DC 10 mA max.
Tamper switch	N.C. 28 V DC 100 mA max. The contact opens once the casing is detached.	
Warm-up time	Approx. 60 s	
Power supply	9.5 to 16 V DC	2.7 to 3.6 V DC (CR123A battery)
Current	12 V DC Stand-by: 11mA, Max.: 13 mA	3 V DC Stand-by: 10µA, Max.: 4 mA
PIR sensitivity	H/ M/ L	
Weight	50 g (1.76 oz)	
Operation temperature	-20 to +50°C (-4°F to +122°F)	
Operation humidity	< 95%	
Location	Indoors	
Dimensions	<p>ø52 x 35.5 mm (ø2.05 in. x 1.40 in.): without switch box 86 x 86 x 36.5 mm (3.39 x 3.39 x 1.44 in.): with 86-type box</p>	

Recessed or 86-type box mount installation

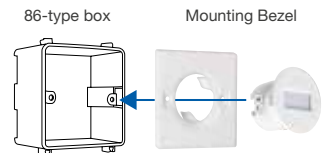
Recessed Mount

The detector can be installed with recessed mount on the walls / ceiling.

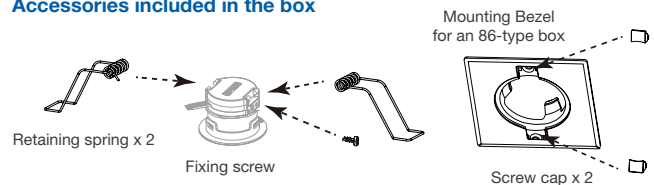


Recessed Mount with 86-type box

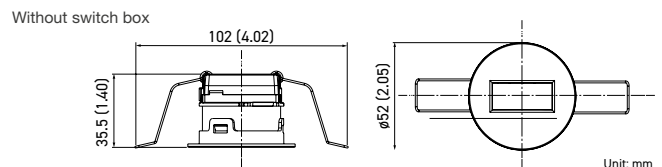
86-type box mount is available by using the included decorative plate.



Accessories included in the box



Dimensions



OPTEx CO., LTD. (JAPAN)
www.optex.co.jp/e

OPTEx EMEA Security Headquarters

OPTEx EUROPE LTD (UK and Africa)
OPTEx Security B.V. (EU)
OPTEx Dubai Branch (Middle East)
W: www.optex-europe.com
E: marketing@optex-europe.com

OPTEx SECURITY SAS

(France, French speaking North and West African countries)
W: www.optex-europe.com/fr
E: contact@optex-security.com

OPTEx SECURITY Sp.z.o.o.

(Eastern Europe, Turkey)
W: www.optex-europe.com/pl
E: optex@optex.com.pl