

INS-HX-80N

VISUAL VERIFICATION PIR CAMERA

InSight series

INSTALLATION INSTRUCTIONS

Quick Guide



Full information is available at
<https://navi.optex.net/manual/50427>

- This "Quick Guide" is the part of the entire installation instructions that guides the installation procedures for installers.
- Get the full information of the installation instructions from the web site.
- If you need a guide to the operation of the whole system, please consult the installer of the entire system.

<< Contents >>

Before installation	Page 1
- Manufacturer's statement	
- Parts identification	
- Accessories	
- CHeKT account	
Step 1 Installation	2
DHCP Enabled	
DHCP Disabled	
Step 2 IP address settings	
QR code linking to InSight Camera manual	
QR code linking to CHeKT support	
Step 3 Device registration to CHeKT portal	
Step 4 Camera angle and PIR area settings	3
Step 5 Checking	
Others	4
- Specifications	
- Dimensions	
- Detection area	
- Compliance	
- How to reset to the factory default	

Before installation

- Manufacturer's statement



Failure to follow the instructions provided with this indication and improper handling may cause death or serious injury.



Failure to follow the instructions provided with this indication and improper handling may cause injury and/or property damage.



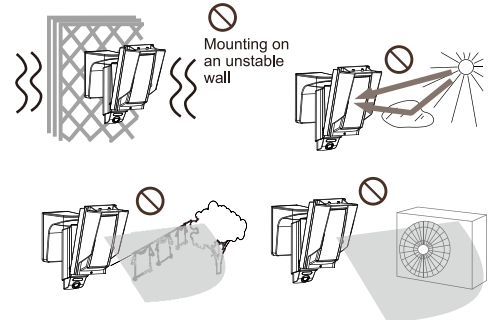
Prohibition



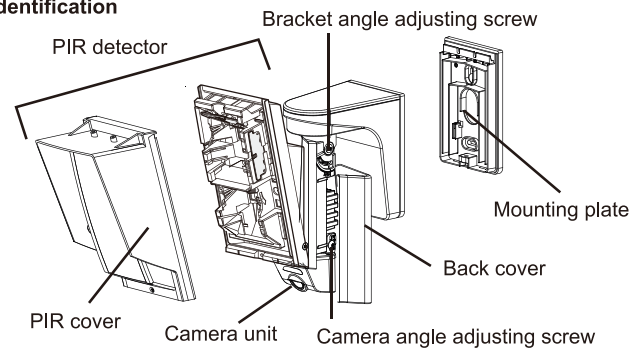
Recommendation

NOTE

Special attention is required to the section of this symbol.



- Parts identification



- Accessories



- CHeKT account

If you do not have a CHeKT account, request a dealer account by visiting the "CHeKT dealer", before Step 3. Refer to the "CHeKT support" for more details.



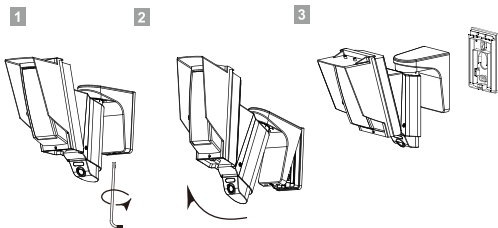
CHeKT dealer
www.chekt.com/registration



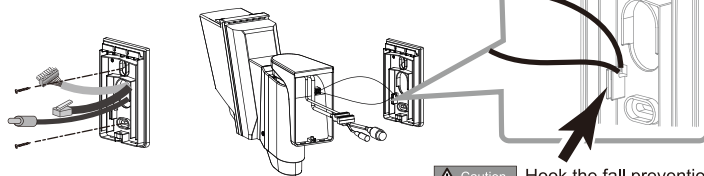
CHeKT support
<https://support.chekt.com>

Step 1 Installation

1-1. Remove the mounting plate



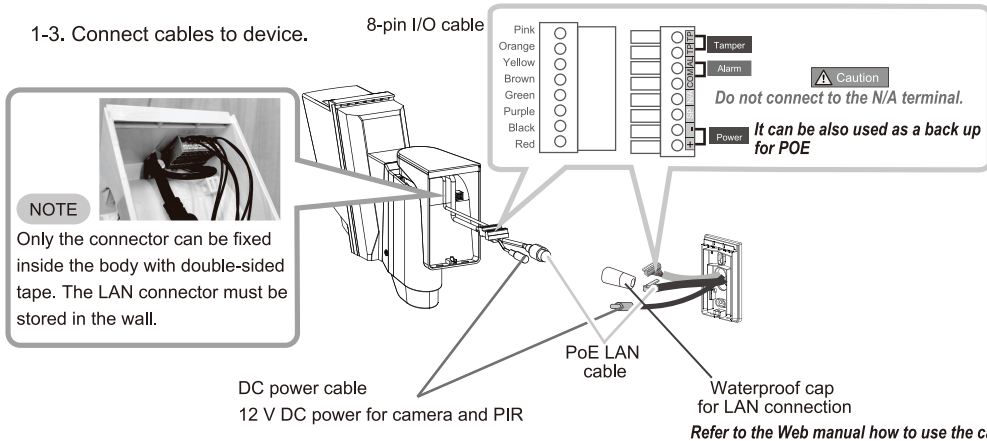
1-2. Install the mounting plate using 2 screws



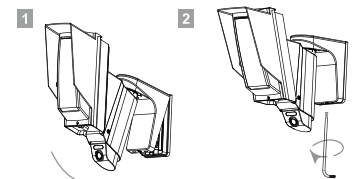
Caution Hook the fall prevention wire.

NOTE To pass cables through the wall, drill a 25 mm (1") or larger hole in the wall.
• Use a single gang box for exposed wiring.

1-3. Connect cables to device.



1-4. Secure the main body



Put the main body back on the mounting plate.

Caution

Do not pinch the cables during assembly.

The default network type of InSight is dynamic.

If you have a DHCP server, it will automatically set the InSight.

Jump to Step 3

Step 3

Device registration to CHeKT portal

Setup your CHeKT Dealer Portal:

1. Go to <http://dealer.chekt.com/> to log in.
2. Select the Customer on the left side of the dashboard.
3. Select the Site Devices tab.
4. Select the bridge device to be associated with the sensor camera.
5. Access the bridge settings using the gear icon to its right.
6. Select the appropriate tab to register the PIR camera.

Refer to the site for more details.



CHeKT support
<https://support.chekt.com>

Step 2

IP address settings

If you do not have a DHCP server, it will set as follows after one minute.

Initial address: **Refer to the label on the InSight**

User name: **root**

Default password: **OPTEx**

Change your password as appropriate.

Download IP installer;

<https://navi.optex.net/firmware/50427>

Refer to the "InSight IP camera install manual" for more details;



InSight Camera manual

<https://navi.optex.net/manual/50427/en/?type=cameramannual>

Step 4

Camera angle and PIR area settings

Changing for each item in this step is optional.

Check the default settings and if no changes are required, proceed to the next item.

Further information, refer to the "INS-HX-80N Full manual" on the Web.



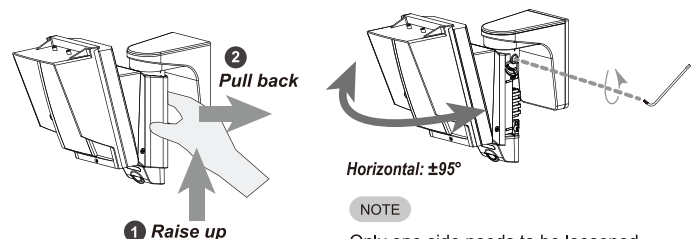
INS-HX-80N Full manual

<https://navi.optex.net/manual/50427/en/?type=installationinstructions>

4-1. Horizontal adjustments

1 Remove the Back cover.

2 Adjust horizontal angle.



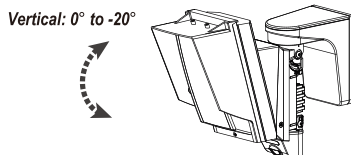
Horizontal: $\pm 95^\circ$

NOTE

Only one side needs to be loosened.

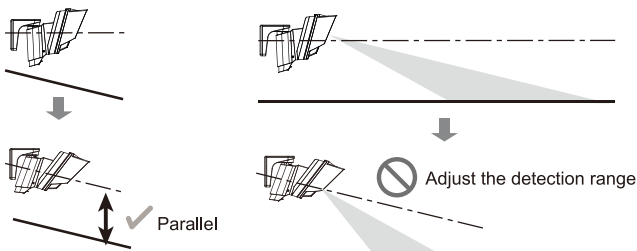
4-2. Vertical adjustments

1 PIR area adjustment



Caution

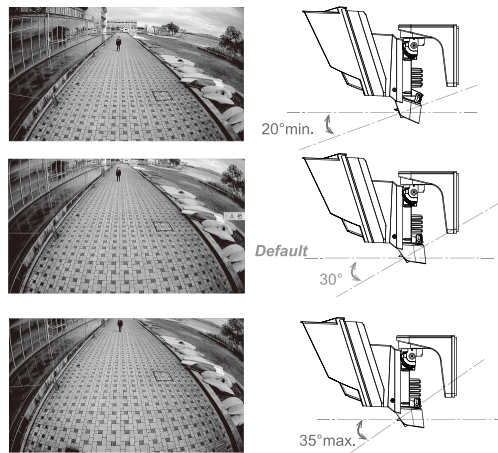
Do not use the vertical angle adjustment of the main unit other than adjusting the detection area surface to be parallel to the ground inclination.



2 Camera angle adjustment

Loosen the screw to adjust camera angle

Angle can be adjusted with either left or right screw.



NOTE

It is recommended that use the Camera angle at 25° to 35° since camera images may appear white and blurred in dark scenes.

4-3. PIR/VCA settings

Refer to the InSight VCA manual for details on Camera angle and PIR area settings.



InSight VCA manual

<https://navi.optex.net/manual/50426/en/?type=VCManual>



Caution

If the vertical angle of the camera is to be adjusted, adjustment of this sections must be matched to ensure the best performance of the sensor.

4-4. Detection range limit

The default settings are 18 m (60') at 2.5 m (8'2") mounting height. If no changes are required, proceed to the next item.

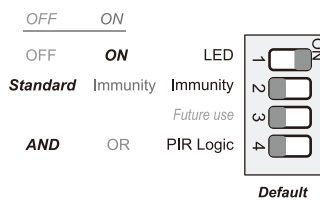


INS-HX-80N Full manual

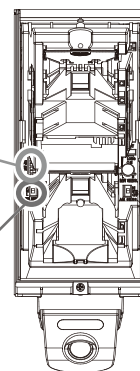
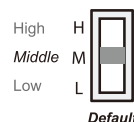
<https://navi.optex.net/manual/50427/en/?type=installationinstructions>

4-5. Switch settings

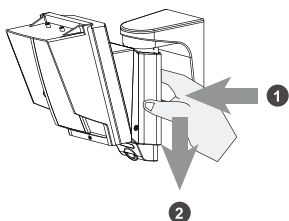
1 Change DIP switch settings as needed



2 Change PIR sensitivity setting as needed



4-6. Put on the back cover



Step

5

Checking

Walk test: Check the detection area by walking around the area.

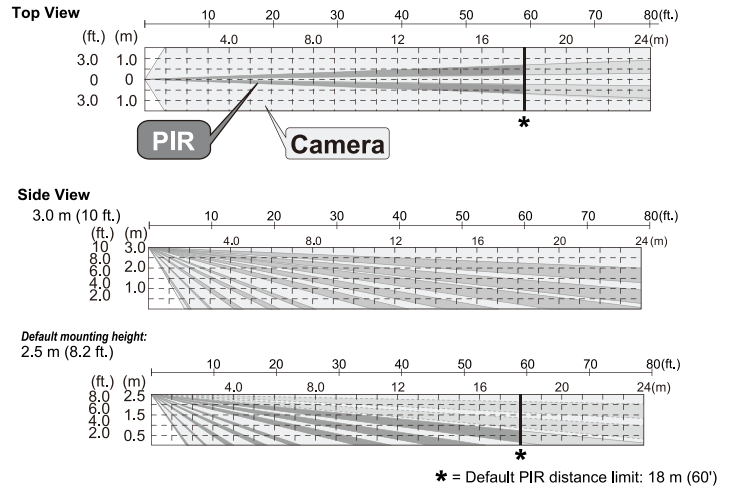
System check: Check the image at the time of detection on the monitoring portal.

Specifications

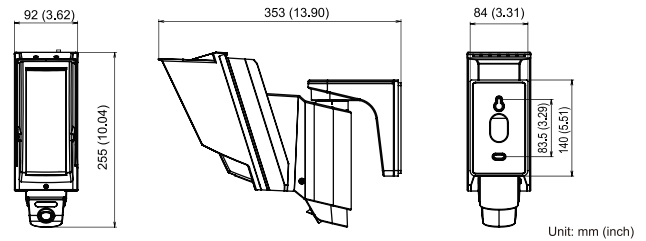
Model	INS-HX-80N
Detection method	Passive infrared
PIR coverage	24 m x 2.0 m (80' x 6'7") narrow
PIR zones	20 zones
PIR distance	6.5 m (22'), 10 m (33'), 13 m (43'), Default: 18 m (60') , 24 m (80')
Detectable speed	0.3 to 1.5 m/s (1' to 5'/s)
Sensitivity	2.0°C (3.6°F) at 0.6 m/s
Power input	PoE (IEEE 802.3af compliant) Mini-jack 12 V DC 420 mA max. Terminal 9.5 to 18 V DC/ 35 mA max. at 12 V DC
Alarm period	2.0 ± 1 s
Warm-up period	Approx. 60 s (LED blinks)
Alarm output	N.C./N.O. switchable, 28 V DC 0.1 A max.
Tamper output	N.C. 28 V DC 0.1 A max. Open when the cover is opened
LED indicator	[1] Warm-up [2] Alarm
Image sensor	1/2.8" CMOS
Viewing angle	H: 114° V: 61°
Minimum illumination	Color: 0.02 lux. 0 lux. with IR
IR illumination	Visible up to 12 m
Night vision	Day & Night Automatic/Manual switching
Image compression	H.264, H.265, MJPEG
Resolution/ frame rate	1080/ 30 fps, D1 (704 x 480 or 704 x 576)
Network protocol	IPv4: TCP/IP, UDP, RTP(UDP/TCP), RTSP, NTP, HTTP, HTTPS, SSL, DHCP, SNMPv1/v2/v3(MIB-2), ONVIF
Security	HTTPS(SSL), IP filtering, 802.1x, Digest authentication (ID/PW)
Operation temperature	-30°C to +50°C (-22°F to +122°F)
Environment humidity	95% max.
International protection	IP 55
Mounting	Wall (Outdoor, Indoor)/Gang box
Mounting height	2.5 to 3.0 m (8' 2" to 10')
Weight	1.2 kg (42.3 oz)
Accessories	[1] Mounting screw (4 x 20 mm) x 2 [2] T20 Torx wrench x 1 [3] Waterproof cap for LAN connector x 1

- Specifications and designs are subject to change without prior notice.
- These units are designed to detect an intruder and activate an alarm control panel. Being only a part of a complete system, we cannot accept responsibility for any damages or other consequences resulting from an intrusion.

Detection area

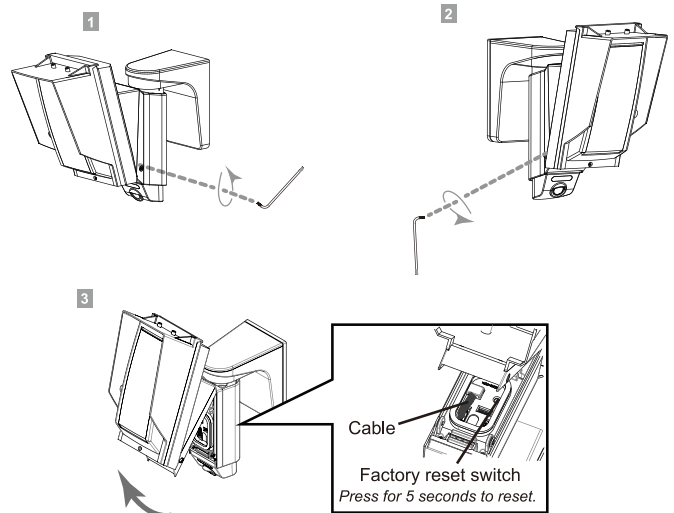


Dimensions



How to reset to the factory default

Follow the steps below to perform a factory reset (for example, forget the password). The IP address, ID, password and camera settings are initialized.



Do not pinch the cables during assembly.

Compliance

Personal Information

This product is equipped with the function to produce moving image of the designated area and its surrounding, but not equipped with the function to store or register such image.

Prior to the installation of this product, the compliance to local laws and regulations needs to be confirmed by the user of this product for the lawful installation and use of this product, and signage and notification when using this product. User of this product is deemed to be responsible for the compliance of any laws and regulations relating to personal information, privacy protection and rights of portrait upon use of this product. Image taken by this product is required to be treated appropriately under the responsibility of the user of this product.

Installation of this product, producing image, monitoring, recording with camera and handling of personal information or data shall all be performed under discretion and responsibility of user of this product, and OPTEX shall not be held liable for any dispute between a user and a third party.

FCC notification

This equipment has been tested and found to comply with the limits for a Class A digital device, pursuant to part 15 of the FCC Rules. These limits are designed to provide reasonable protection against harmful interference when the equipment is operated in a commercial environment.

This equipment generates, uses, and can radiate radio frequency energy and, if not installed and used in accordance with the instruction manual, may cause harmful interference to radio communications. Operation of this equipment in a residential area is likely to cause harmful interference in which case the user will be required to correct the interference at his own expense.

About distribution of source code for open source software

This product includes open source software ("OSS") distributed under OSS License. In compliance with the OSS Licenses such as GPL (GNU GENERAL PUBLIC LICENSE), LGPL (GNU LESSER GENERAL PUBLIC LICENSE), and/or others included, we are making the source code of the OSS available, at the actual cost, to our customer upon his/her request. The source code corresponding to OSS included in this product will be provided in a prescribed manner for at least than three(3) years after the date of purchase. Please note that the OSS is provided without warranty of any kind.

EU/UK contact information



<https://navi.optex.net/cert/contact/>



OPTEX INC./AMERICAS HQ (U.S.)
www.optexamerica.com

OPTEX (EUROPE) LTD./EMEA HQ (U.K.)
www.optex-europe.com

OPTEX SECURITY B.V.
(The Netherlands)
www.optex-europe.com/nl

OPTEX CO., LTD. (JAPAN)
www.optex.net

OPTEX SECURITY SAS (France)
www.optex-europe.com/fr

OPTEX SECURITY Sp. z o.o. (Poland)
www.optex-europe.com/pl

OPTEX PINNACLE INDIA,
PVT., LTD. (India)
www.optexpinnacle.com

OPTEX KOREA CO., LTD. (Korea)
www.optexkorea.com

OPTEX (DONGGUAN) CO., LTD.
SHANGHAI OFFICE (China)
www.optexchina.com

OPTEX (Thailand) CO., LTD. (Thailand)
www.optex.co.th

Copyright (C) 2021-2022 OPTEX CO., LTD.