

REDWALL[®]
Unrivaled performance

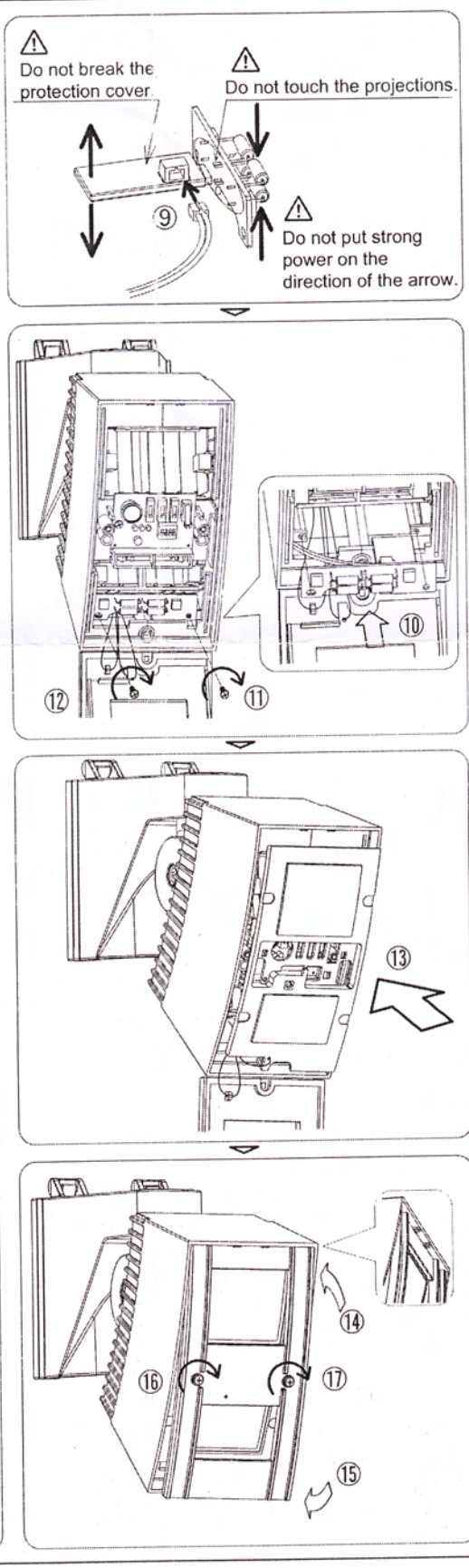
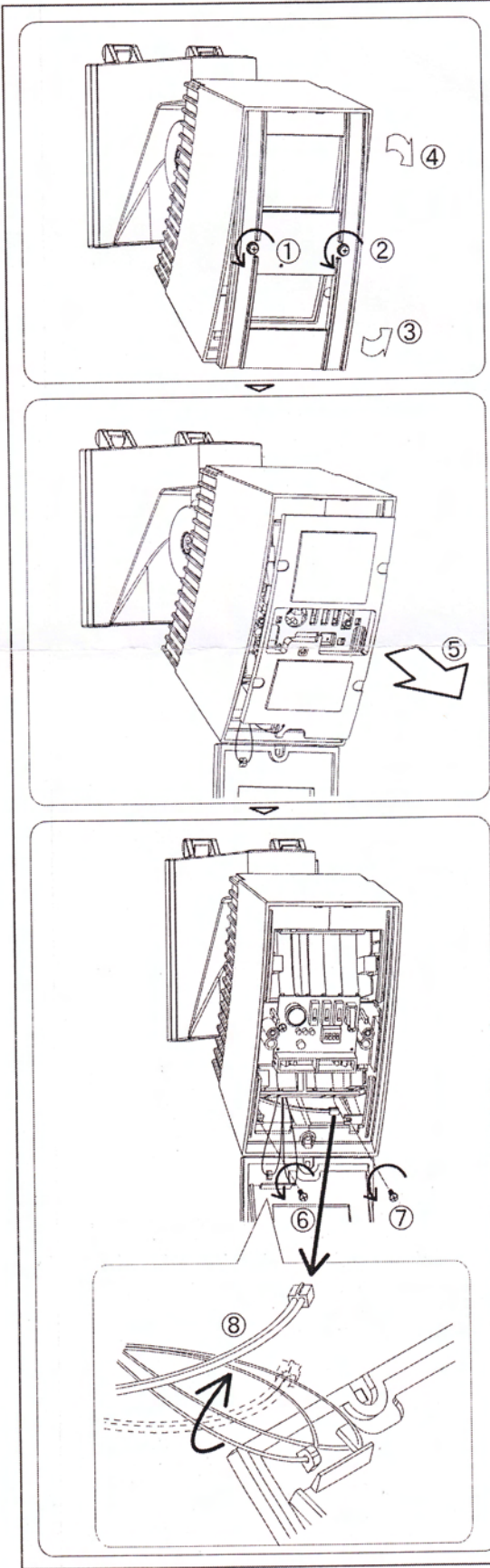
Instruction Manual
Heating Unit
SIP-HU



Installing the SIP-HU to SIP series

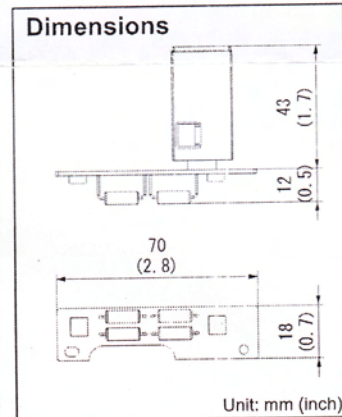
Caution Verify that the power is off before installation.	Caution When installation, do not touch the projections of the unit to prevent injury.	Caution When you operate, do not touch Unit to prevent the burn.
---	--	--

SIP-HU can be used for the following models;
SIP-3020, SIP-3020/5, SIP-4010, SIP-4010/5, SIP-404, SIP-404/5
SIP-5030, SIP-100



Specifications	
Name	Heating Unit
Model	SIP-HU
Power supply	Supplied from the SIP unit
Power consumption	Max.6W
Max.surface temperature	100°C (212° F)
Operating temperature	20°C or less (68° F or less)
Weight	10g (0.4 oz)

Cautions>>
When SIP-HU is used, the power for SIP unit should be 22-26V AC.



OPTEX

OPTEX CO., LTD. (JAPAN)
(ISO 9001 Certified) (ISO 14001 Certified)
5-8-12 Ogoto Otsu Shiga 520-0101 JAPAN
TEL:+81-77-579-8670 FAX:+81-77-579-8190
URL:<http://www.optex.co.jp/el>

OPTEX INCORPORATED (USA)
13661 Benson Ave., Bldg.
C.Chino,
CA 91710 U.S.A.
TEL:+1-909-993-5770
Tech:(800)866-7839
URL:<http://www.optexamerica.com>

OPTEX (EUROPE) LTD. (UK)
Clivernon Road, Maidenhead,
Berkshire, SL6 7BU
UK
TEL:+44-1628-631000
URL:<http://www.optexeuropa.com>

OPTEX SECURITY SAS (FRANCE)
475 Rue Monique et Mario Piani
69480 Amberieux d'Azergues
France
TEL:+33-437-55-50-50
URL:<http://www.optex-security.com>

OPTEX SECURITY Sp.z o.o. (POLAND)
ul.Bitwy Warszawskiej 1920
r.7B,02-366
Warszawa,Poland
TEL:+48-22-598-06-55
URL:<http://www.optex.com.pl>